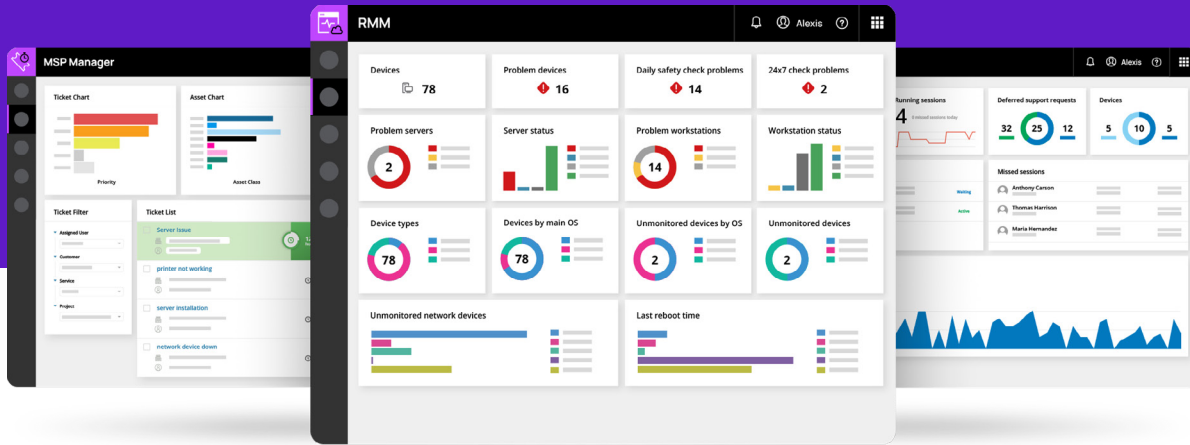


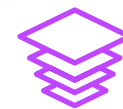
# Unlocking your IT possibilities

The N-able RMM Bundle empowers services providers not only for today, but tomorrow.

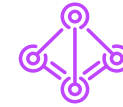


Curated and designed to be a purpose-built platform for the hard-working technology professionals, N-able™ RMM, Take Control, and MSP combine to provide the complete end-to-end solution that delivers superior functionality, flexibility, and scalability for MSPs that need to monitor more, automate more, and earn more.

The bundle allows MSPs to consistently deliver world-class automation and value to their business and clients through our innovative engineering teams, secure-by-design approach, and support resources that far surpass what other platforms offer.



**Bundled software solutions**



**Fully Integrated**



**Unsurpassed pre/post-sales support**

Here's how the N-able RMM Bundle\* unlocks your potential with everything your MSP needs for today and tomorrow:

## Robust remote monitoring & management

- Monitor all your devices from one dashboard
- Automate routine tasks with no scripting experience required
- Onboard new customers and devices quickly
- Quickly identify issues with monitoring dashboards
- Analyze network traffic to spot bottlenecks
- 100% cloud based with automatic updates

## Fast access & support

- Secure end-to-end remote connections with all major devices
- Faster file transfers
- 8 second connections to Windows®, Mac®, and Linux® devices
- 4K+ resolution, multi-monitor, and 24-bit true color support

## Professional ticketing & billing

- Maintain clear lines of communication with clients
- Capture all billable time
- Create detailed invoices
- Gain insight from tactical and technical reports



## Remote monitoring & management

N-able RMM  
100 nodes



All from  
**\$99/mo.**



**Remote access**  
N-able Take Control  
1 license



**Ticketing & billing**  
N-able MSP Manager  
3 licenses

\*Bundle Includes 100 Nodes, 1 Remote Access & Support License, and 3 Professional Ticketing & Billing Licenses for \$99.

## PLATFORM FEATURES AT A GLANCE

Take Control includes:	RMM includes:	MSP Manager includes:
<ul style="list-style-type: none"> <li>• Attended and unattended support</li> <li>• Native iOS and Android® applications</li> <li>• Live chat and fast file transfers</li> <li>• Brandable and intuitive user experience</li> <li>• Cut/paste or drag/drop file transfers</li> <li>• Support for 6 languages</li> <li>• Customized emails and alerts</li> <li>• AES-256 and TLS 1.2 data encryption</li> </ul>	<ul style="list-style-type: none"> <li>• Windows, macOS®, Linux, iOS, and Android device support</li> <li>• Asset discovery and inventory tracking</li> <li>• Infrastructure management with 400+ out-of-the-box scripts</li> <li>• Drag-and-drop automation</li> <li>• Flexible patch policy management (including most common third-party applications)</li> <li>• One-click remote sessions</li> <li>• Support for Exchange™ and Microsoft 365™</li> <li>• Network path analysis</li> <li>• Integrated Security**</li> </ul>	<ul style="list-style-type: none"> <li>• Automatic ticket scheduling and appointment tracking</li> <li>• Ticket tracking and management</li> <li>• Accurate time tracking</li> <li>• Professional invoices</li> <li>• User stats and analytics</li> <li>• Interactive dashboards</li> <li>• Brandable customer portal</li> <li>• Business performance dashboard</li> <li>• Mobile app for technicians</li> </ul>

\*\*Traditional AV, autonomous endpoint security (EDR), web protection, password management, mail filtering available at additional cost(s).



# The N-able RMM Bundle gives you more

Don't settle for a starter platform—get the complete IT solution

	N-able™ RMM Bundle	Atera Growth Platform	Syncro MSP Platform	NinjaOne RMM
Monitoring	●	◐	◐	◐
Automation	●	◐	◐	●
Patch Management	●	◐	◐	◐
Network Device Discovery & Monitoring	●	◐	○	●
PSA	●	○	○	◐
Remote Support	●	◐	◐	◐
Legend	● included	◐ partially included	○ not available	Information is accurate at the time it is published (January 2022)

## THE EDGE YOU WON'T FIND ANYWHERE ELSE

Whether you're new to the industry or an experienced tech professional, we are here for you. We aim to make the transition from starting out to effectively delivering world-class managed services as seamless as possible. With our bundle of solutions and third-party integrations, you can address your customer goals and needs, and capture every billable dollar using a managed services model.

No one is better suited to choose the best partner for your business and clients than you—and the N-able RMM Bundle helps make the choice that much easier.

N-able partners can take advantage of much more than just our software, including the following benefits:

### MSP Institute:

World-class product and business training at your fingertips.

### Automation Cookbook:

Access to over 400 automation policies, custom monitoring, and scripts to help you attain more efficacy and efficiency for your business.

### Head Nerds:

Advocates, educators, and trusted experts and guides who help ensure partner successes with their knowledge.

### MarketBuilder:

Customizable, ready-made content tailored specifically for IT professionals to help you pitch your services with ease.

### Opportunities to engage:

Live boot camps, office hours, live demos, eBooks, and an in-depth resource library to offer additional support.

“I’ve been providing IT solutions since 2003 . . . I started out doing break/fix work for homes. Shortly afterward, I moved to doing small businesses, but I was still trapped in the break/fix business model. Then, in 2013, I ended up signing up for N-able and I’ve been a big fan ever since.”

**ERIK PFEIFFER,**

OWNER, SILVER ACE CONSULTING

## NEED MORE REASONS TO JOIN THE PURPLE SIDE?

N-able ranked #1 in CRN’s 2021 Annual Report Card. We exceeded peers in three of the four categories to secure the overall win for the 2021 CRN ARC Award for Best in Class, MSP Platforms. The three categories were Product Innovation, Partnership, and Managed and Cloud Services, which highlights our dedication to our partners and our desire to continue to go FORWARD TOGETHER.

## About N-able

N-able empowers managed services providers (MSPs) to help small and medium enterprises navigate the digital evolution. With a flexible technology platform and powerful integrations, we make it easy for MSPs to monitor, manage, and protect their end customer systems, data, and networks. Our growing portfolio of security, automation, and backup and recovery solutions is built for IT services management professionals. N-able simplifies complex ecosystems and enables customers to solve their most pressing challenges. We provide extensive, proactive support—through enriching partner programs, hands-on training, and growth resources—to help MSPs deliver exceptional value and achieve success at scale.

[n-able.com](https://n-able.com)

© 2022 N-able Solutions ULC and N-able Technologies Ltd. All rights reserved.

The N-able trademarks, service marks, and logos are the exclusive property of N-able Solutions ULC and N-able Technologies Ltd. All other trademarks are the property of their respective owners.

This document is provided for informational purposes only and should not be relied upon as legal advice. N-able makes no warranty, express or implied, or assumes any legal liability or responsibility for the information contained herein, including for the accuracy, completeness, or usefulness of any information contained herein.